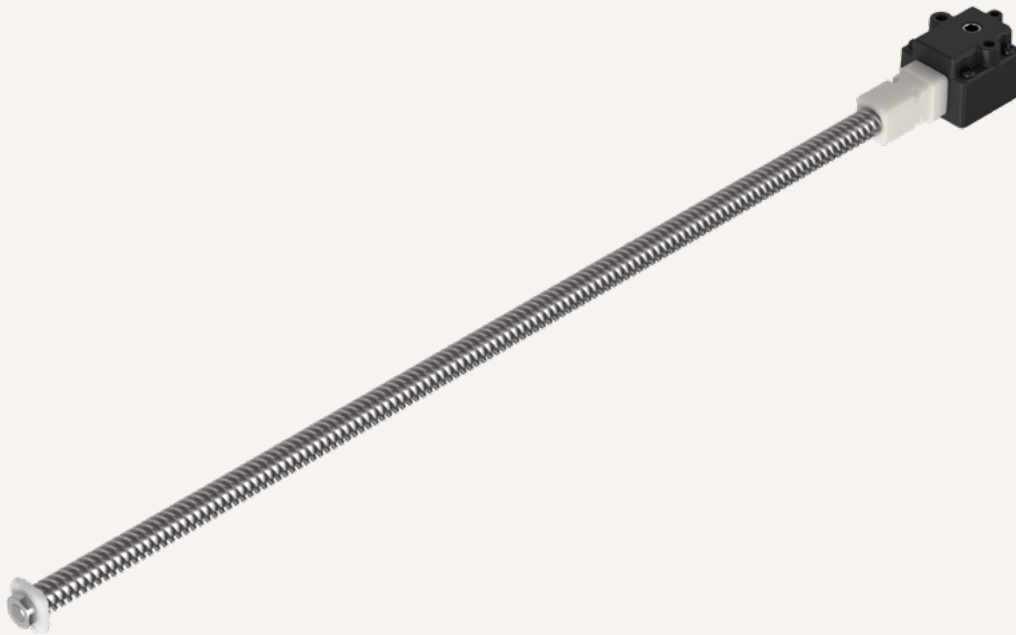


TBS1

series



Product Segments

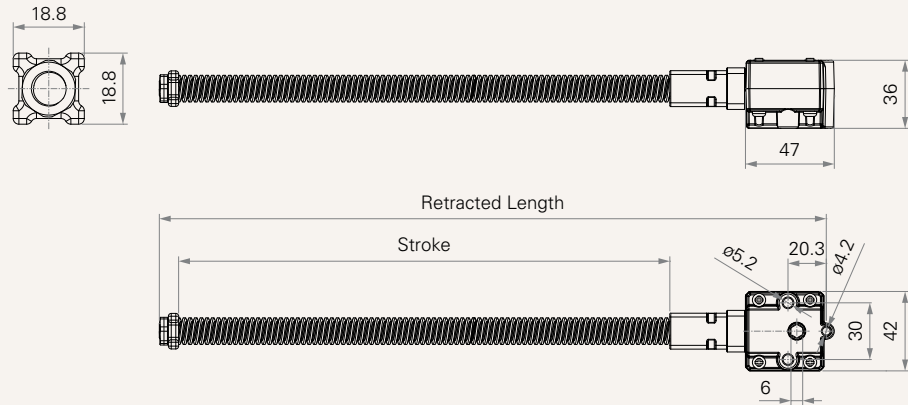
- **Ergo Motion**
- **Industrial Motion**

General Features

Especially designed for TGM series	
Recommended stroke	20~600mm
Retracted length	\geq stroke + 93mm (without inner tube)
Max. load	1,000N

Drawing

Standard Dimensions
(mm)



Load and Speed

CODE	Spindle	Gear Ratio	Rated Load (N)	Rated Torque (Nm)	Lead (mm/turn)	Typical Speed (mm/s)
A	4*4	1	1000	4.6	16	(TGM motor speed/60)*1*16
B	4*5	1	1000	5.4	20	(TGM motor speed/60)*1*20

Note

1 Please refer to the approved drawing for the final authentic value.

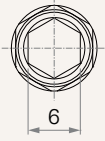
TBS1

Version: 20210818-F

Load and Speed	See page 2	
Stroke (mm)	020-600	
Retracted Length (mm)	With inner tube: Minimum retract length needs to $\geq S+110$ Without inner tube: Minimum retract length needs to $\geq S+93$	
Input Torque (mm)	1 = Coupler hole, 6 See page 4	
NUT	1 = With	
Inner Tube (mm)	0 = Without See page 4	1 = Square tube, 22*22
Front Attachment (mm)	0 = Without See page 4	1 = Plastic

Input Torque (mm)

1 = Coupler hole, 6

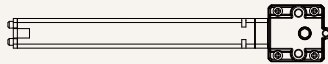


Inner Tube (mm)

0 = Without

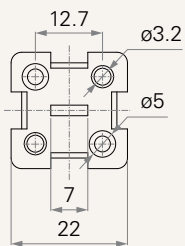


1 = Square tube, 22*22



Front Attachment (mm)

1 = Plastic



Terms of Use

The user is responsible for determining the suitability of TiMOTION products for a specific application. TiMOTION products are subject to change without prior notice.